

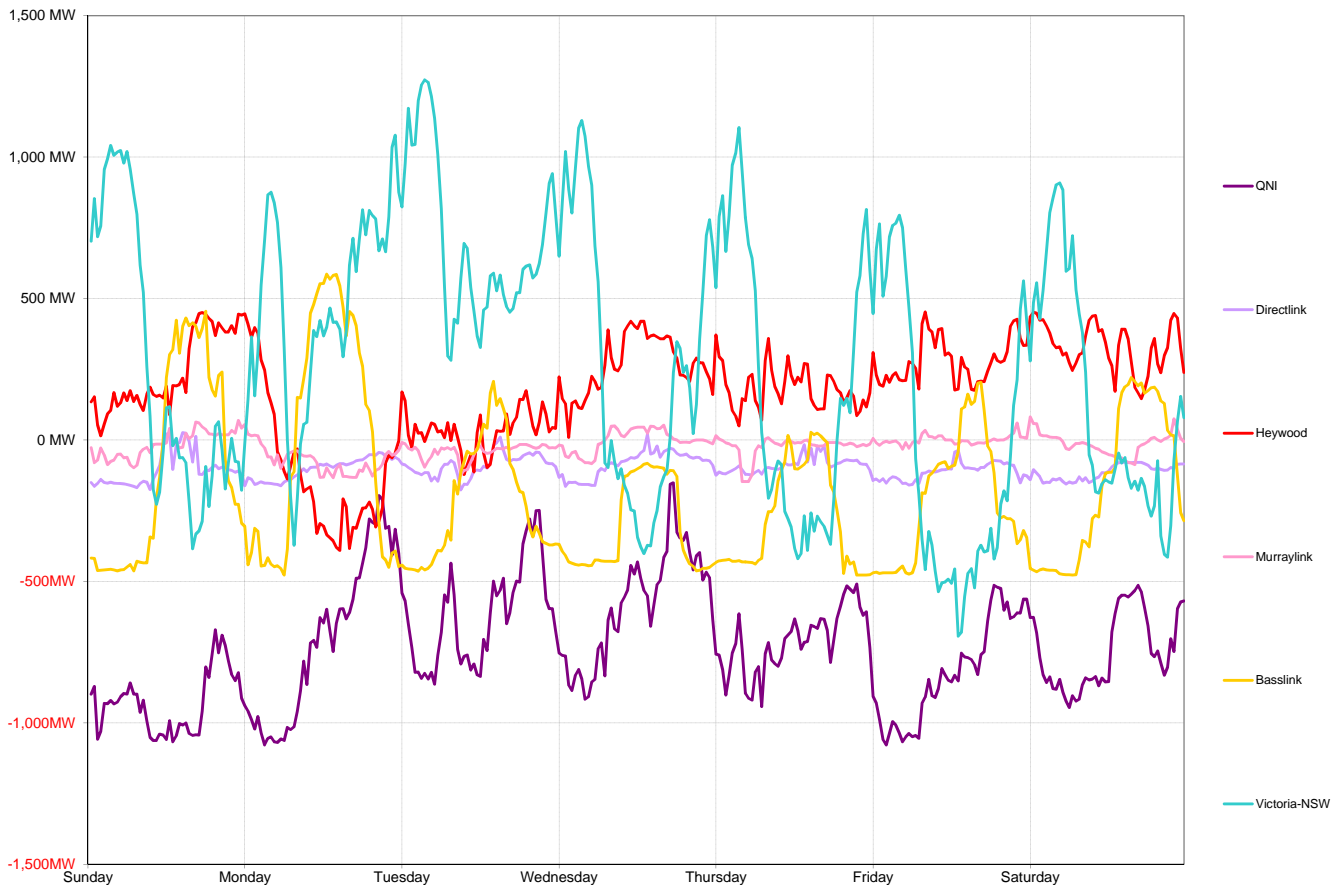
# National Electricity Market Report

Week 5 Ending Saturday 04-Feb-12

## Daily Inter-Regional Energy Flow

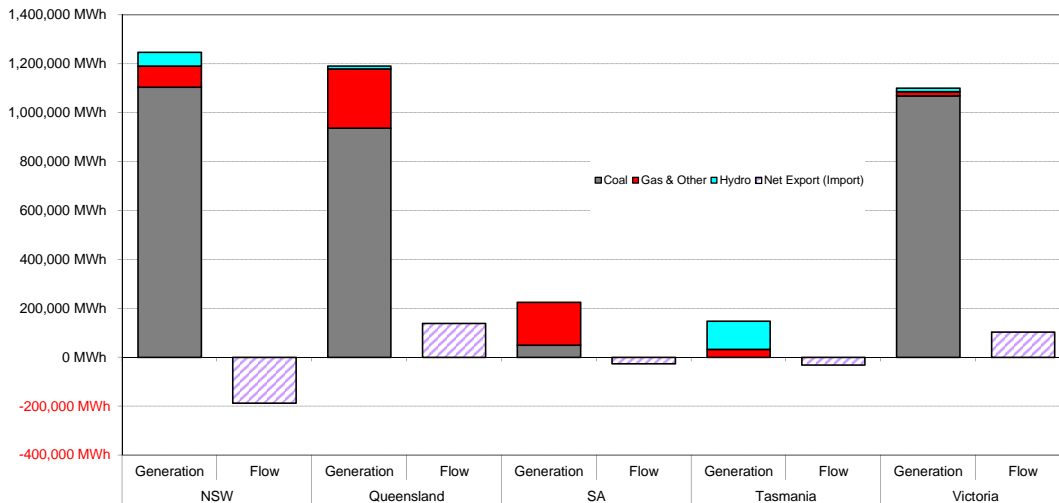
	Daily Net Exports (or Imports)							Weekly Total
	Sunday	Monday	Tuesday	Wednesday	Thursday	Friday	Saturday	
<b>For the Current Week</b>								
NSW	-30,904	-30,940	-33,927	-22,200	-23,677	-21,200	-23,745	-186,591
Queensland	24,887	19,149	17,159	16,006	19,293	22,307	20,654	139,453
South Australia	-5,482	4,372	154	-6,423	-3,747	-6,808	-7,566	-25,498
Tasmania	-2,336	43	-5,273	-7,462	-6,639	-5,080	-3,889	-30,635
Victoria	13,835	7,376	21,887	20,078	14,769	10,781	14,545	103,271
<b>MWh Change from Same Week Last Year</b>								
NSW	-9,238	-802	5,337	17,381	17,153	18,309	19,060	67,200
Queensland	11,900	-3,013	-6,117	-2,930	-2,118	4,217	1,187	3,127
South Australia	-3,326	11,031	-2,426	-5,963	-908	-4,955	-6,840	-13,386
Tasmania	-6,160	-7,827	-10,696	-15,606	-12,665	-11,558	-5,631	-70,142
Victoria	6,824	610	13,902	7,119	-1,463	-6,014	-7,776	13,201
<b>For the Same Week Last Year</b>								
NSW	-21,667	-30,138	-39,264	-39,580	-40,830	-39,509	-42,804	-253,791
Queensland	12,987	22,161	23,276	18,936	21,411	18,090	19,467	136,326
South Australia	-2,156	-6,659	2,580	-460	-2,839	-1,853	-726	-12,112
Tasmania	3,824	7,870	5,424	8,144	6,027	6,478	1,742	39,507
Victoria	7,012	6,767	7,986	12,960	16,232	16,795	22,321	90,070

## Interconnector energy flow throughout the week

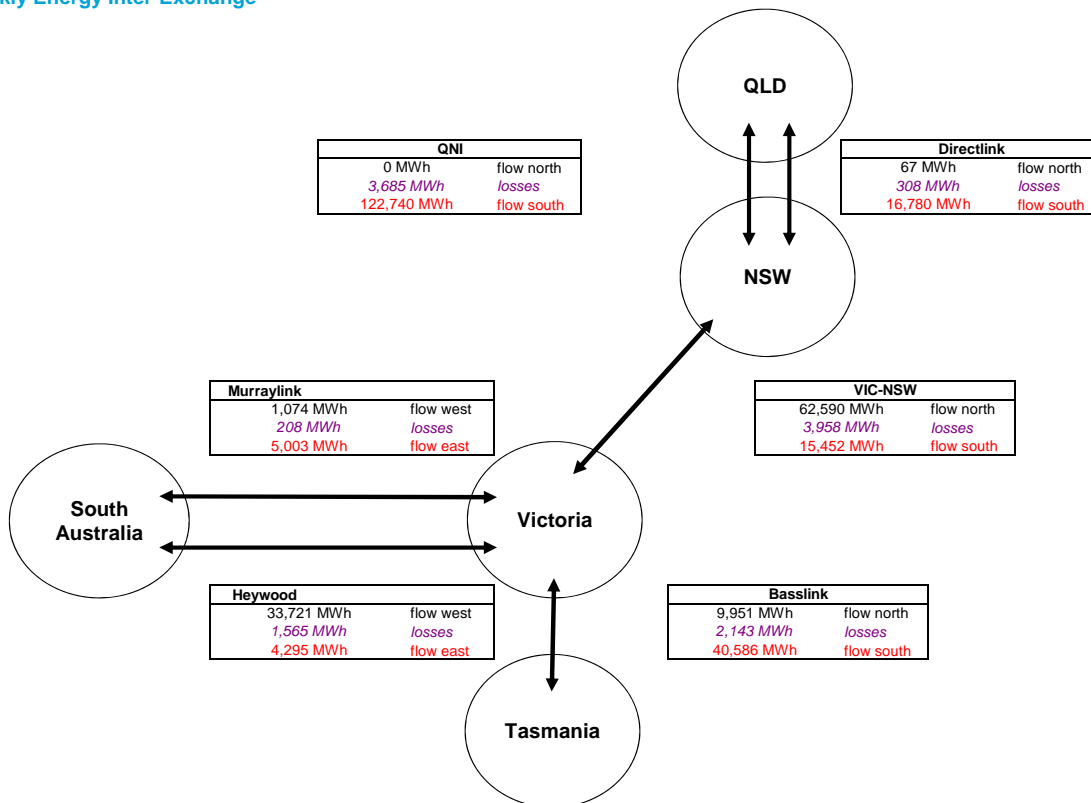


### Generation by Fuel Type

	All data in this table is shown in MWh for the week											
	NSW		Queensland		SA		Tasmania		Victoria		Whole of NEM	
	Generation	Flow	Generation	Flow	Generation	Flow	Generation	Flow	Generation	Flow	Generation	Flow
Coal	1,104,734		936,893		50,641		0		1,069,934		3,162,202	
Gas & Other	86,226		242,160		174,588		32,690		16,761		552,424	
Hydro	56,686		12,011		0		115,932		14,801		199,429	
Pump Storage	-2,744		0		0		0		0		-2,744	
<b>Total Generation</b>	<b>1,244,902</b>		<b>1,191,064</b>		<b>225,229</b>		<b>148,622</b>		<b>1,101,495</b>		<b>3,911,311</b>	
Total Exports		15,519		139,520		9,298		9,951		137,971		
Total Imports		202,110		67		34,795		40,586		34,700		
<b>Net Export (Import)</b>		<b>-186,591</b>		<b>139,453</b>		<b>-25,498</b>		<b>-30,635</b>		<b>103,271</b>		
Net Consumption	1,431,493		1,051,611		250,727		179,257		998,225			

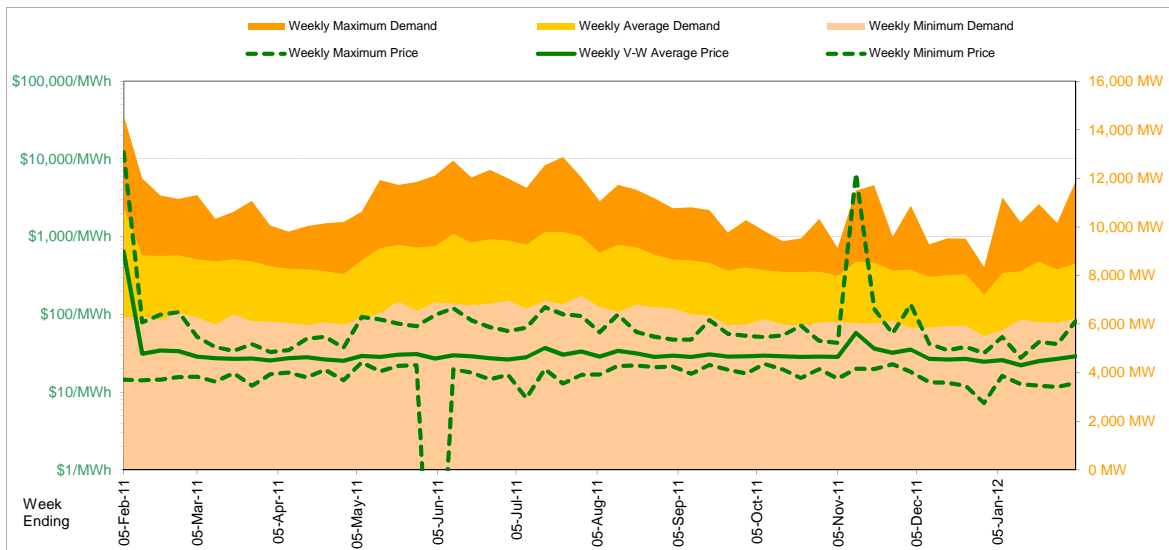


### Weekly Energy Inter-Exchange



Current Year

Energy (MWh)	Total	Week 5 Ending Saturday		52-weeks ending Sat		Date Occurred
		4-Feb-12	% change	5-Feb-11	4-Feb-12	
		1,427,120	-21%	1,810,412	75,531,752	
Trading Demand (MW)	Maximum	11,886	-18%	14,580	12,884	23-Jul-11
	Average	8,495	-21%	10,776	8,646	
	Minimum	6,233	-1%	6,280	5,515	31-Dec-11
Regional Load Factor (%)		71%		74%	67%	
Trading Price (\$/MWh)	Maximum	81.51	-99%	12136.17	6497.76	
	Volume-Weighted Ave	29.00	-95%	640.81	29.59	
	Time-Weighted Ave	28.12	-94%	501.30	28.77	
	Minimum	12.98	-10%	14.42	-147.03	
Temperature °C (Sydney)	Maximum	33.2	-19%	41.0	37.2	
	Minimum	16.7	-6%	17.8	5.5	

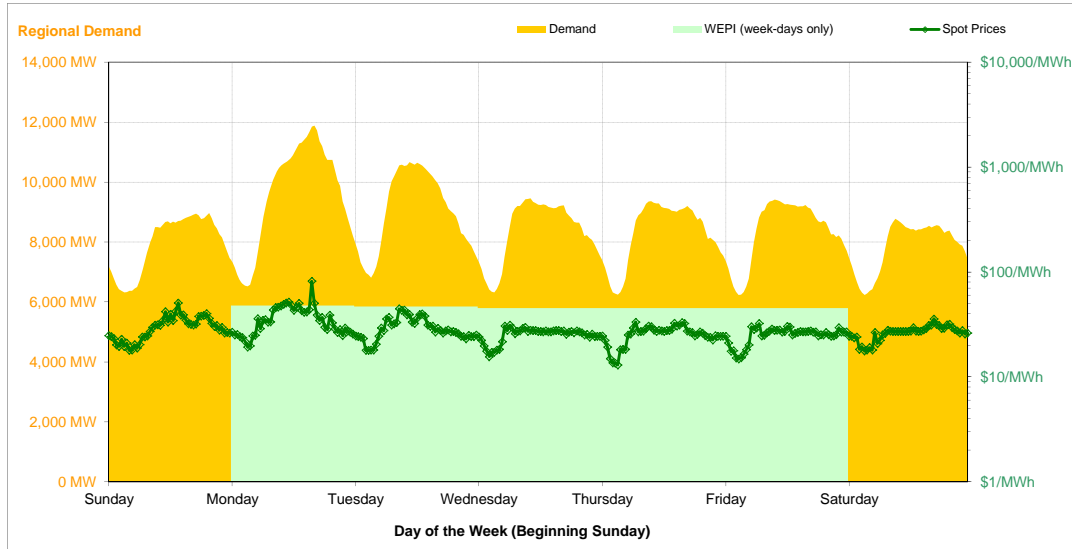


Note that prices below \$1/MWh have been reset to \$1/MWh for the purposes of this display

Current Week

All Data in this table is shown in MWh								
	Weekly Total	Sunday	Monday	Tuesday	Wednesday	Thursday	Friday	Saturday
<b>Total Production by Generation Company</b>								
Alinta Energy	1,465	1,438	0	9	0	0	0	19
Delta Electricity	372,685	44,148	55,826	56,257	53,894	51,068	53,131	58,363
Eraring Energy	238,235	31,356	36,679	33,102	33,243	37,726	36,775	29,355
Infigen Energy	3,115	263	789	649	659	487	199	71
Macquarie Generation	498,588	73,653	78,949	72,022	71,186	66,271	71,131	65,378
Marubeni	19,625	1,920	3,170	3,154	3,153	3,151	3,158	1,920
Snowy Hydro (NSW)	51,580	1,302	12,266	9,876	8,913	8,746	7,575	2,904
TRUenergy	54,373	7,476	8,018	7,959	7,128	7,773	7,873	8,148
Origin Energy	3,939	0	3,373	566	0	0	0	0
Other NSW Plants	4,042	429	840	518	952	917	320	67
<b>Total internal production</b>	<b>1,247,645</b>	<b>161,983</b>	<b>199,908</b>	<b>184,110</b>	<b>179,127</b>	<b>176,135</b>	<b>180,160</b>	<b>166,223</b>
(Load at Pumped Storage)	-2,744	-1,480	-40	0	0	0	0	-1,224
<b>Net internal production</b>	<b>1,244,902</b>	<b>160,503</b>	<b>199,868</b>	<b>184,110</b>	<b>179,127</b>	<b>176,135</b>	<b>180,160</b>	<b>165,000</b>
<b>Percentage each company's production represents of the total internal production</b>								
Alinta Energy	0.1%	0.9%	0.0%	0.0%	0.0%	0.0%	0.0%	0.0%
Delta Electricity	29.9%	27.3%	27.9%	30.6%	30.1%	29.0%	29.5%	35.1%
Eraring Energy	19.1%	19.4%	18.3%	18.0%	18.6%	21.4%	20.4%	17.7%
Infigen Energy	0.2%	0.2%	0.4%	0.4%	0.4%	0.3%	0.1%	0.0%
Macquarie Generation	40.0%	45.5%	39.5%	39.1%	39.7%	37.6%	39.5%	39.3%
Marubeni	1.6%	1.2%	1.6%	1.7%	1.8%	1.8%	1.8%	1.2%
Snowy Hydro (NSW)	4.1%	0.8%	6.1%	5.4%	5.0%	5.0%	4.2%	1.7%
TRUenergy	4.4%	4.6%	4.0%	4.3%	4.0%	4.4%	4.4%	4.9%
Origin Energy	0.3%	0.0%	1.7%	0.3%	0.0%	0.0%	0.0%	0.0%
Other NSW Plants	0.3%	0.3%	0.4%	0.3%	0.5%	0.5%	0.2%	0.0%
<b>Total Percentage</b>	<b>100.0%</b>	<b>100.0%</b>	<b>100.0%</b>	<b>100.0%</b>	<b>100.0%</b>	<b>100.0%</b>	<b>100.0%</b>	<b>100.0%</b>

Current Week (continued)



	Sunday	Monday	Tuesday	Wednesday	Thursday	Friday	Saturday
<b>For the Current Week</b>							
Total Energy (MWh)	190,567	230,202	217,263	200,897	199,314	200,629	188,249
Trading Demand Target (MW)	Maximum	8,963	11,886	10,665	9,457	9,361	8,780
	Average	7,940	9,592	9,053	8,371	8,305	8,360
	Minimum	6,315	6,521	6,813	6,321	6,242	6,234
Regional Load Factor (%)	89%	81%	85%	89%	89%	89%	89%
Wholesale Electricity Price Index (WEPI)	N/A	47.97	46.92	45.40	45.33	45.30	N/A
	Maximum	50.73	81.51	44.51	31.07	33.28	32.22
	Volume-Weighted Ave	30.53	37.24	29.99	25.76	25.86	25.55
Trading Price (\$/MWh)	Time-Weighted Ave	29.76	35.73	29.13	25.38	25.33	25.14
	Minimum	17.88	19.15	17.86	15.58	12.98	14.77
	Maximum	27.3	33.2	28.8	21.9	20.2	21.0
Temperature °C (Sydney)	22.0	21.7	25.3	18.4	18.5	16.7	17.0
<b>Percentage Change from Same Week Last Year</b>							
Total Energy (MWh)	-7%	-10%	-20%	-27%	-27%	-25%	-27%
Trading Demand Target (MW)	Maximum	-17%	-14%	-27%	-34%	-35%	-32%
	Average	-7%	-10%	-20%	-27%	-27%	-25%
	Minimum	1%	-4%	-6%	-21%	-21%	-18%
Wholesale Electricity Price Index (WEPI)	N/A	-30%	-69%	-69%	-35%	-20%	N/A
Trading Price (\$/MWh)	Maximum	-44%	-99%	-100%	-100%	-99%	-98%
	Volume-Weighted Ave	-24%	-92%	-98%	-98%	-93%	-84%
	Time-Weighted Ave	-19%	-90%	-98%	-98%	-91%	-82%
Temperature °C (Sydney)	Minimum	24%	19%	-10%	-32%	-47%	-26%
	Maximum	-3%	5%	-14%	-30%	-46%	-38%
	Minimum	24%	-2%	11%	-30%	-26%	-30%
<b>For the Same Week Last Year</b>							
Total Energy (MWh)	205,270	257,071	273,210	276,883	271,528	267,451	259,001
Trading Demand Target (MW)	Maximum	10,772	13,786	14,580	14,417	14,450	13,810
	Average	8,553	10,711	11,384	11,537	11,314	11,144
	Minimum	6,280	6,797	7,272	8,043	7,938	7,630
Regional Load Factor (%)	79%	78%	78%	80%	78%	81%	82%
Wholesale Electricity Price Index (WEPI)	N/A	68.33	151.60	144.53	70.23	56.66	N/A
	Maximum	90.27	6019.97	12136.17	10417.07	2968.96	1686.58
	Volume-Weighted Ave	39.97	455.42	1589.28	1470.94	350.60	205.21
Trading Price (\$/MWh)	Time-Weighted Ave	36.64	365.18	1281.98	1207.53	291.95	177.66
	Minimum	14.42	16.12	19.80	22.76	24.58	19.90
	Maximum	28.2	31.6	33.5	31.2	37.5	33.7
Temperature °C (Sydney)	17.8	22.2	22.7	26.1	25.1	24.0	24.2

Long-Term Trends

This table contains electricity futures pricing, supplied by d-cyphatrade. All data other than flat and peak quarterly pricing is implied.

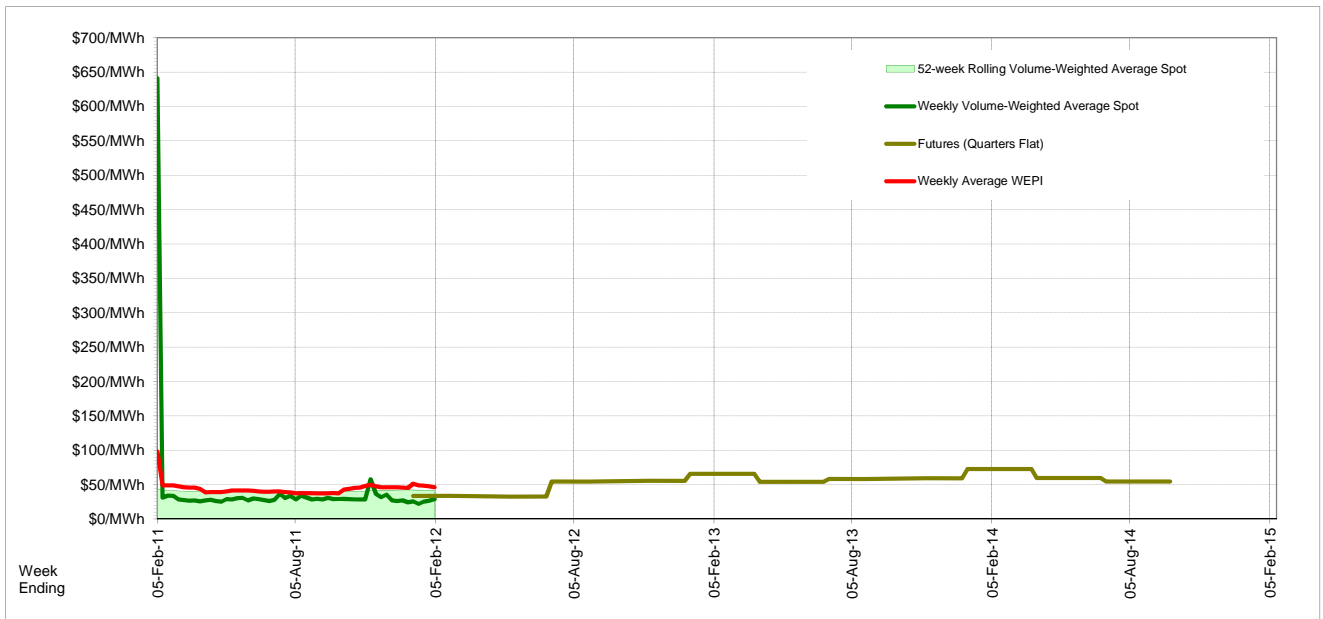
Futures settlement prices for flat load (all times)		CaYear	FinYear Ending	Q1	Q2	Q3	Q4
		2012	44.07	33.50	32.80	54.40	55.35
		2013	59.30	57.35	65.60	54.20	59.40
		2014	60.25	62.36	72.50	59.65	54.55
		2015					

Futures settlement prices for peak load (7am-10pm M-F)		CaYear	FinYear Ending	Q1	Q2	Q3	Q4
		2012	56.32	47.00	43.40	65.00	69.20
		2013	75.15	72.67	91.75	65.45	74.00
		2014	58.03	72.04	89.00	55.00	47.50
		2015					

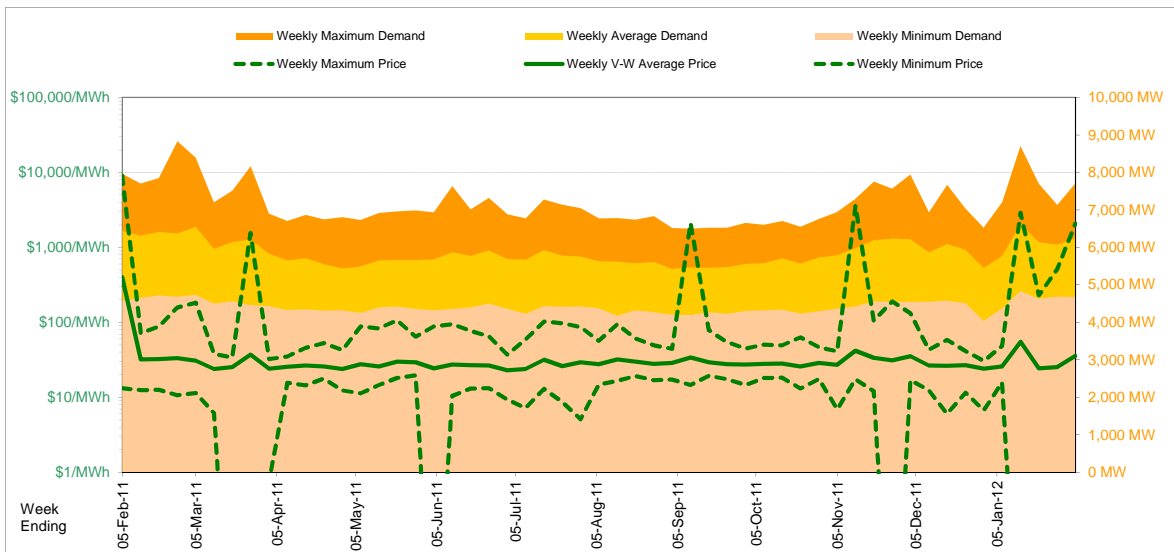
  

Implied Prices for Off-Peak Load (All other times)		CaYear	FinYear Ending	Q1	Q2	Q3	Q4
		2012	34.19	22.61	24.25	45.85	44.18
		2013	46.52	45.00	44.51	45.13	48.50
		2014	62.04	54.55	59.19	63.40	60.24
		2015					



Current Year

Energy (MWh)	Total	Week 5 Ending Saturday		52-Weeks Ending Sat		Date Occurred
		4-Feb-12	% change	5-Feb-11	4-Feb-12	
Trading Demand (MW)	Maximum	7,714	-3%	7,958	8,836	26-Feb-11
	Average	6,246	-3%	6,437	5,841	
	Minimum	4,676	2%	4,578	4,041	31-Dec-11
Regional Load Factor (%)		81%		81%	66%	
Trading Price (\$/MWh)	Maximum	2079.70	-77%	9043.67	3607.81	
	Volume-Weighted Ave	35.85	-91%	402.95	29.13	
	Time-Weighted Ave	34.72	-90%	339.32	28.17	
	Minimum	-48.50	-468%	13.18	-195.35	
Temperature °C (Brisbane)	Maximum	30.0	-8%	32.6	37.1	
	Minimum	20.3	-2%	20.8	5.3	

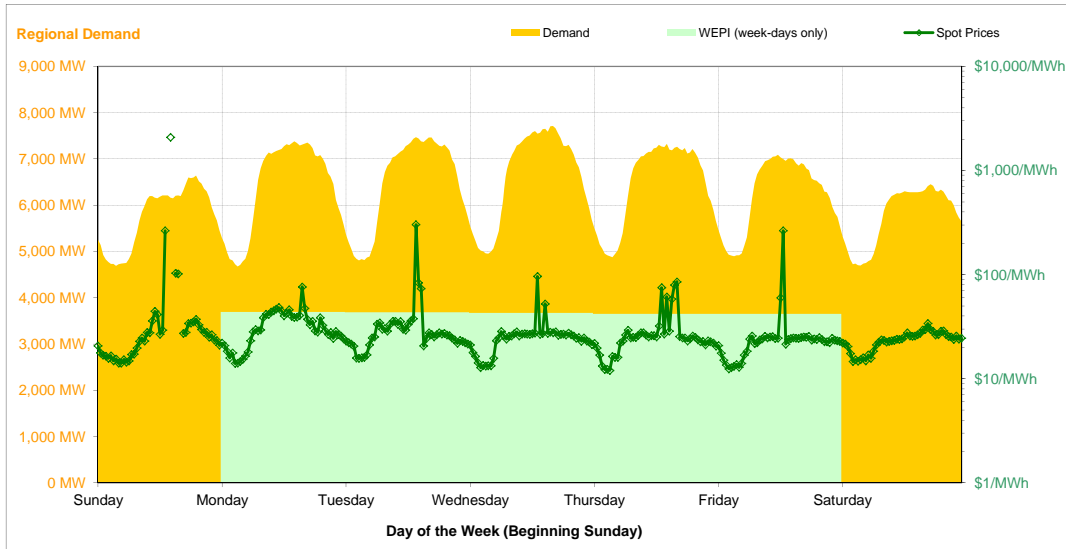


Note that prices below \$1/MWh have been reset to \$1/MWh for the purposes of this display

Current Week

All Data in this table is shown in MWh								
	Weekly Total	Sunday	Monday	Tuesday	Wednesday	Thursday	Friday	Saturday
<b>Total Production by Generation Company</b>								
AGL	20,893	437	4,043	4,545	4,163	4,041	3,666	0
Alinta Energy	41,660	3,607	7,052	6,897	5,549	5,592	6,459	6,506
Braemar 2 Partnership	18,023	2,911	3,205	2,463	2,697	2,301	2,561	1,886
Callide Power Trading	108,019	17,795	12,926	14,801	16,720	16,646	16,286	12,846
CS Energy	269,423	39,361	36,642	38,899	41,516	41,095	38,114	33,797
Millmerran Energy Trader	140,154	19,831	19,729	19,347	20,192	20,381	20,102	20,573
Origin Energy	80,242	11,522	11,758	11,578	12,238	12,213	10,856	10,080
Stanwell	268,436	36,970	41,037	38,688	37,310	36,376	38,541	39,516
Tarong Energy	148,625	19,524	22,633	21,766	20,854	21,564	21,902	20,383
Tarong North Trader	58,223	6,488	8,609	8,729	8,632	8,840	8,384	8,542
Other QLD Plants	37,369	5,276	5,527	5,165	5,387	5,336	5,397	5,282
<b>Total internal production</b>	<b>1,191,064</b>	<b>163,719</b>	<b>173,159</b>	<b>172,876</b>	<b>175,255</b>	<b>174,383</b>	<b>172,266</b>	<b>159,408</b>
(Load at Pumped Storage)	0	0	0	0	0	0	0	0
<b>Net internal production</b>	<b>1,191,064</b>	<b>163,719</b>	<b>173,159</b>	<b>172,876</b>	<b>175,255</b>	<b>174,383</b>	<b>172,266</b>	<b>159,408</b>
<b>Percentage each company's production represents of the total internal production</b>								
AGL	1.8%	0.3%	2.3%	2.6%	2.4%	2.3%	2.1%	0.0%
Alinta Energy	3.5%	2.2%	4.1%	4.0%	3.2%	3.2%	3.7%	4.1%
Braemar 2 Partnership	1.5%	1.8%	1.9%	1.4%	1.5%	1.3%	1.5%	1.2%
Callide Power Trading	9.1%	10.9%	7.5%	8.6%	9.5%	9.5%	9.5%	8.1%
CS Energy	22.6%	24.0%	21.2%	22.5%	23.7%	23.6%	22.1%	21.2%
Millmerran Energy Trader	11.8%	12.1%	11.4%	11.2%	11.5%	11.7%	11.7%	12.9%
Origin Energy	6.7%	7.0%	6.8%	6.7%	7.0%	7.0%	6.3%	6.3%
Stanwell	22.5%	22.6%	23.7%	22.4%	21.3%	20.9%	22.4%	24.8%
Tarong Energy	12.5%	11.9%	13.1%	12.6%	11.9%	12.4%	12.7%	12.8%
Tarong North Trader	4.9%	4.0%	5.0%	5.0%	4.9%	5.1%	4.9%	5.4%
Other QLD Plants	3.1%	3.2%	3.2%	3.0%	3.1%	3.1%	3.1%	3.3%
<b>Total Percentage</b>	<b>100.0%</b>	<b>100.0%</b>	<b>100.0%</b>	<b>100.0%</b>	<b>100.0%</b>	<b>100.0%</b>	<b>100.0%</b>	<b>100.0%</b>

Current Week (continued)



	Sunday	Monday	Tuesday	Wednesday	Thursday	Friday	Saturday
<b>For the Current Week</b>							
Total Energy (MWh)	138,186	153,671	155,542	159,135	154,880	149,543	138,407
Trading Demand Target (MW)	Maximum	6,641	7,380	7,469	7,714	7,322	6,450
	Average	5,758	6,403	6,481	6,631	6,453	6,231
	Minimum	4,692	4,676	4,806	4,952	4,876	4,898
Regional Load Factor (%)	87%	87%	87%	86%	88%	88%	89%
Wholesale Electricity Price Index (WEPI)	N/A	43.70	43.44	42.73	41.99	41.96	N/A
	Maximum	2079.70	76.24	301.78	95.71	85.24	263.96
	Volume-Weighted Ave	76.65	33.46	35.84	26.63	29.00	28.68
Trading Price (\$/MWh)	Time-Weighted Ave	72.50	31.94	34.11	25.72	27.89	27.52
	Minimum	-48.50	14.04	15.70	12.77	12.02	12.43
	Temperature °C (Brisbane)	Maximum	26.3	28.2	29.1	30.0	28.4
	Minimum	21.8	22.3	22.4	22.4	22.4	20.6
<b>Percentage Change from Same Week Last Year</b>							
Total Energy (MWh)	-1%	-1%	-3%	-1%	1%	-6%	-9%
Trading Demand Target (MW)	Maximum	1%	-3%	-5%	-3%	-4%	-11%
	Average	-1%	-1%	-3%	-1%	1%	-6%
	Minimum	-2%	1%	-1%	-0%	7%	4%
Wholesale Electricity Price Index (WEPI)	N/A	28%	16%	6%	5%	2%	N/A
Trading Price (\$/MWh)	Maximum	2,482%	-72%	-96%	-99%	-87%	-86%
	Volume-Weighted Ave	112%	-67%	-96%	-98%	-81%	-82%
	Time-Weighted Ave	109%	-65%	-96%	-98%	-80%	-81%
Temperature °C (Brisbane)	Minimum	-468%	-4%	-8%	-36%	-32%	-42%
	Maximum	-12%	-9%	-5%	-6%	-9%	-14%
	Minimum	5%	6%	-4%	-11%	-8%	-13%
<b>For the Same Week Last Year</b>							
Total Energy (MWh)	139,189	155,057	160,109	161,035	154,038	159,024	152,922
Trading Demand Target (MW)	Maximum	6,550	7,607	7,821	7,958	7,638	7,928
	Average	5,800	6,461	6,671	6,710	6,418	6,626
	Minimum	4,770	4,642	4,873	4,953	4,578	4,715
Regional Load Factor (%)	89%	85%	85%	84%	84%	84%	87%
Wholesale Electricity Price Index (WEPI)	N/A	34.14	37.34	40.33	39.90	41.26	N/A
	Maximum	80.56	275.03	7349.99	9043.67	662.31	1663.09
	Volume-Weighted Ave	36.23	102.08	935.47	1241.07	154.26	163.64
Trading Price (\$/MWh)	Time-Weighted Ave	34.72	92.11	807.79	1062.39	137.68	145.71
	Minimum	13.18	14.58	17.04	20.11	17.58	17.15
	Temperature °C (Brisbane)	Maximum	30.0	31.1	30.7	31.8	31.3
	Minimum	20.8	21.1	23.2	25.0	24.3	23.6

Long-Term Trends

This table contains electricity futures pricing, supplied by d-cyphatrade. All data other than flat and peak quarterly pricing is implied.

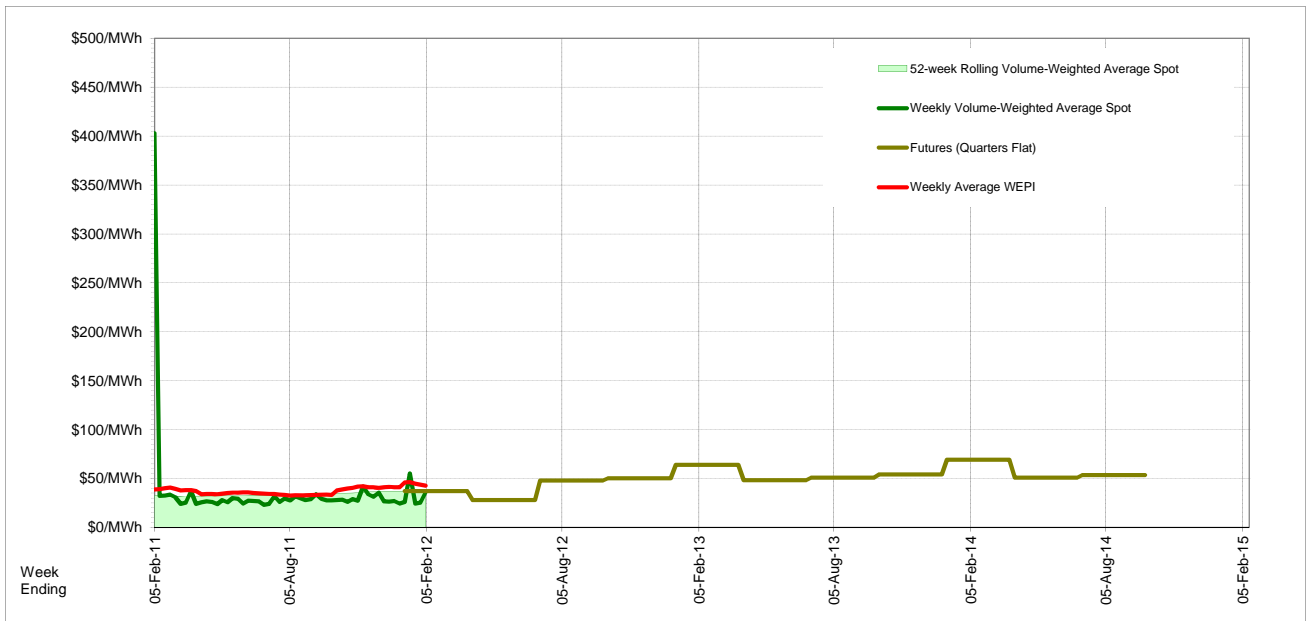
Futures settlement prices for flat load (all times)		CalYear	FinYear Ending	Q1	Q2	Q3	Q4
		2012		37.20	27.90	47.85	50.10
		2013	52.44	63.75	48.25	50.70	54.00
		2014	56.07	69.00	50.80	53.55	
		2015					

Futures settlement prices for peak load (7am-10pm M-F)		CalYear	FinYear Ending	Q1	Q2	Q3	Q4
		2012		54.50	35.20	55.25	59.00
		2013	65.24	90.00	57.50	63.00	71.80
		2014	73.27	115.00	48.00	60.00	
		2015					

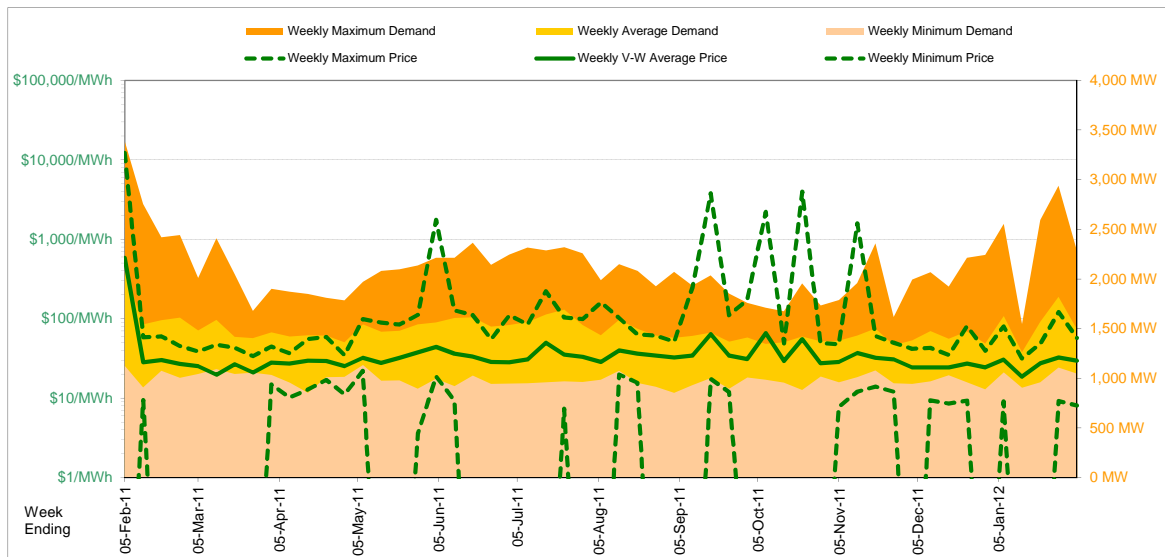
  

Implied Prices for Off-Peak Load (All other times)		CalYear	FinYear Ending	Q1	Q2	Q3	Q4
		2012		23.25	22.01	41.88	42.92
		2013	42.12	42.58	40.79	40.78	39.65
		2014	41.21	31.90	53.06	48.35	
		2015					



Current Year

		Week 5 Ending Saturday			52-Weeks Ending Sat	
		4-Feb-12	% change	5-Feb-11	4-Feb-12	Date Occurred
Energy (MWh)	Total	250,472	-28%	348,060	12,946,408	
	Maximum	2,277	-33%	3,385	2,939	28-Jan-12
	Average	1,491	-28%	2,072	1,482	
Trading Demand (MW)	Maximum	1,048	-7%	1,124	854	3-Sep-11
	Average	65%		61%	50%	
	Minimum					
Regional Load Factor (%)	Maximum	57.18	-100%	12199.53	3956.29	
	Volume-Weighted Ave	29.66	-95%	582.28	32.23	
	Time-Weighted Ave	28.62	-92%	377.15	30.61	
	Minimum	8.05	105%	-153.18	-996.70	
Trading Price (\$/MWh)	Maximum	31.3	-27%	42.9	41.6	
	Volume-Weighted Ave	13.6	-30%	19.4	1.3	
	Minimum					

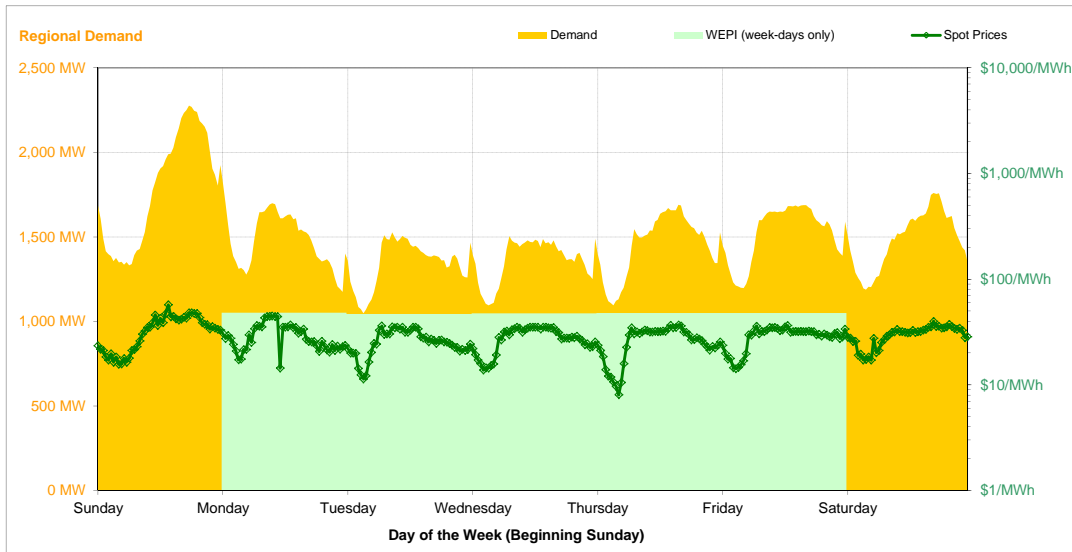


Note that prices below \$1/MWh have been reset to \$1/MWh for the purposes of this display

Current Week

All Data in this table is shown in MWh								
	Weekly Total	Sunday	Monday	Tuesday	Wednesday	Thursday	Friday	Saturday
<b>Total Production by Generation Company</b>								
AGL	75,041	13,471	14,347	10,504	9,238	9,170	7,739	10,574
Flinders Power	50,641	7,872	7,907	6,683	6,480	6,460	7,756	7,485
Infigen Energy	9,818	447	2,644	2,074	1,867	1,860	807	120
International Power (Pelican Point)	50,571	9,569	6,846	6,642	1,950	7,742	9,505	8,318
International Power (Synergen)	37	0	0	0	0	0	37	0
Origin Energy	907	907	0	0	0	0	0	0
Osborne	18,826	3,237	3,255	3,236	3,262	3,159	2,678	0
TRUenergy	10	0	0	0	0	10	0	0
Other SA Plants	19,380	1,894	5,005	3,305	3,519	2,792	1,230	1,637
<b>Total internal production</b>	<b>225,229</b>	<b>37,394</b>	<b>40,003</b>	<b>32,443</b>	<b>26,316</b>	<b>31,192</b>	<b>29,751</b>	<b>28,133</b>
(Load at Pumped Storage)	0	0	0	0	0	0	0	0
<b>Net internal production</b>	<b>225,229</b>	<b>37,394</b>	<b>40,003</b>	<b>32,443</b>	<b>26,316</b>	<b>31,192</b>	<b>29,751</b>	<b>28,133</b>
<b>Percentage each company's production represents of the total internal production</b>								
AGL	33.3%	36.0%	35.9%	32.4%	35.1%	29.4%	26.0%	37.6%
Flinders Power	22.5%	21.1%	19.8%	20.6%	24.6%	20.7%	26.1%	26.6%
Infigen Energy	4.4%	1.2%	6.6%	6.4%	7.1%	6.0%	2.7%	0.4%
International Power (Pelican Point)	22.5%	25.6%	17.1%	20.5%	7.4%	24.8%	31.9%	29.6%
International Power (Synergen)	0.0%	0.0%	0.0%	0.0%	0.0%	0.0%	0.1%	0.0%
Origin Energy	0.4%	2.4%	0.0%	0.0%	0.0%	0.0%	0.0%	0.0%
Osborne	8.4%	8.7%	8.1%	10.0%	12.4%	10.1%	9.0%	0.0%
TRUenergy	0.0%	0.0%	0.0%	0.0%	0.0%	0.0%	0.0%	0.0%
Other SA Plants	8.6%	5.1%	12.5%	10.2%	13.4%	8.9%	4.1%	5.8%
<b>Total Percentage</b>	<b>100.0%</b>	<b>100.0%</b>	<b>100.0%</b>	<b>100.0%</b>	<b>100.0%</b>	<b>100.0%</b>	<b>100.0%</b>	<b>100.0%</b>

Current Week (continued)



	Sunday	Monday	Tuesday	Wednesday	Thursday	Friday	Saturday
<b>For the Current Week</b>							
Total Energy (MWh)	42,829	35,579	32,285	32,697	34,915	36,517	35,651
Trading Demand Target (MW)	Maximum	2,277	1,818	1,527	1,503	1,690	1,688
	Average	1,785	1,482	1,345	1,362	1,455	1,522
	Minimum	1,331	1,175	1,048	1,095	1,094	1,197
Regional Load Factor (%)	78%	82%	88%	91%	86%	90%	84%
Wholesale Electricity Price Index (WEPI)	N/A	48.26	46.81	47.48	47.75	47.68	N/A
	Maximum	57.18	44.75	36.01	35.18	36.91	39.92
	Volume-Weighted Ave	34.90	29.75	26.52	28.25	27.12	29.30
Trading Price (\$/MWh)	Time-Weighted Ave	33.04	29.09	25.94	27.71	26.22	29.64
	Minimum	15.60	14.35	11.34	13.75	8.05	14.16
	Maximum	31.3	24.8	22.3	23.9	29.0	27.7
Temperature °C (Adelaide)	Maximum	31.3	24.8	22.3	23.9	29.0	27.7
	Minimum	23.4	19.9	15.1	13.6	15.0	14.3
<b>Percentage Change from Same Week Last Year</b>							
Total Energy (MWh)	-16%	-43%	-39%	-35%	-29%	-27%	11%
Trading Demand Target (MW)	Maximum	-21%	-46%	-42%	-46%	-35%	-38%
	Average	-16%	-43%	-39%	-35%	-29%	-27%
	Minimum	6%	-24%	-33%	-19%	-22%	-20%
Wholesale Electricity Price Index (WEPI)	N/A	-81%	12%	19%	14%	11%	N/A
	Maximum	-84%	-100%	-68%	-87%	-62%	-68%
	Volume-Weighted Ave	-60%	-99%	-43%	-60%	-43%	-27%
Trading Price (\$/MWh)	Time-Weighted Ave	-52%	-99%	-41%	-56%	-43%	-27%
	Minimum	270%	-12%	12%	193%	-65%	-20%
	Maximum	-26%	-42%	-33%	-34%	-11%	-20%
Temperature °C (Adelaide)	Maximum	-26%	-42%	-33%	-34%	-11%	-20%
	Minimum	-9%	-29%	-47%	-30%	-36%	-44%
<b>For the Same Week Last Year</b>							
Total Energy (MWh)	50,897	62,517	52,677	50,643	48,980	50,219	32,129
Trading Demand Target (MW)	Maximum	2,898	3,385	2,643	2,783	2,581	2,702
	Average	2,121	2,605	2,195	2,110	2,041	2,092
	Minimum	1,255	1,538	1,572	1,350	1,406	1,501
Regional Load Factor (%)	73%	77%	83%	76%	79%	77%	80%
Wholesale Electricity Price Index (WEPI)	N/A	253.49	41.96	40.02	41.91	42.84	N/A
	Maximum	358.16	12199.53	112.15	263.04	98.13	53.85
	Volume-Weighted Ave	87.49	2986.73	46.47	71.17	47.96	40.18
Trading Price (\$/MWh)	Time-Weighted Ave	68.93	2347.71	43.61	62.51	46.25	39.08
	Minimum	-9.19	16.34	10.10	4.70	23.16	17.79
	Maximum	42.5	42.9	33.2	36.0	32.7	34.5
Temperature °C (Adelaide)	Maximum	42.5	42.9	33.2	36.0	32.7	34.5
	Minimum	25.8	28.2	28.7	19.4	23.6	25.4

Long-Term Trends

This table contains electricity futures pricing, supplied by d-cyphatrade. All data other than flat and peak quarterly pricing is implied.

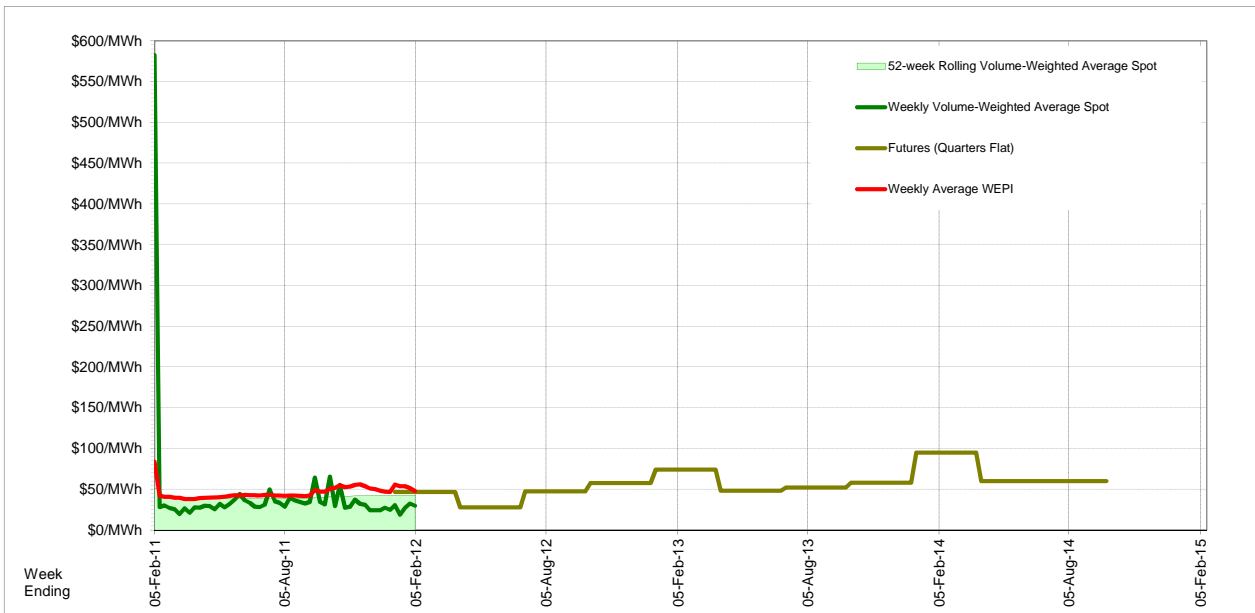
<b>Futures settlement prices for flat load (all times)</b>		CalYear	FinYear Ending	Q1	Q2	Q3	Q4
	2012	44.90		46.75	27.70	47.25	57.75
	2013	57.96	56.68	74.00	48.00	52.00	58.10
	2014	69.39	66.13	95.00	60.00	60.00	
	2015						

<b>Futures settlement prices for peak load (7am-10pm M-F)</b>		CalYear	FinYear Ending	Q1	Q2	Q3	Q4
	2012	67.35		90.00	34.50	59.00	85.50
	2013	73.50	78.01	116.60	53.00	55.00	72.00
	2014	55.83	65.71	100.00	36.50	42.75	
	2015						

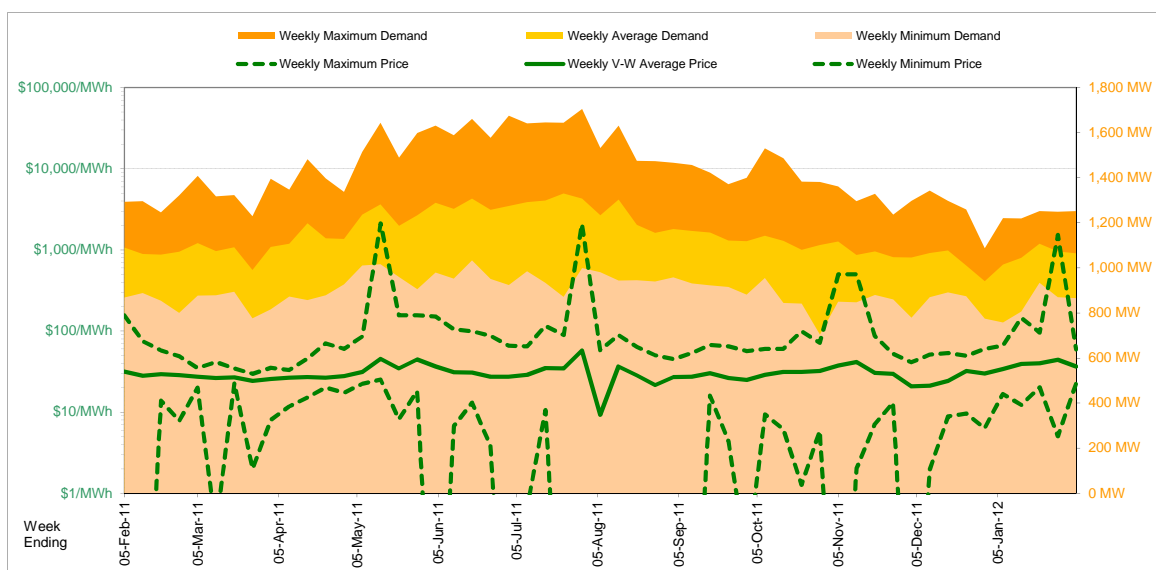
  

<b>Implied Prices for Off-Peak Load (All other times)</b>		CalYear	FinYear Ending	Q1	Q2	Q3	Q4
	2012	26.80		11.87	22.22	37.77	35.37
	2013	45.43	39.48	39.65	43.97	49.58	46.89
	2014	80.33	66.47	90.97	78.95	73.91	
	2015						



Current Year

		Week 5 Ending Saturday			52-Weeks Ending Sat	
		4-Feb-12	% change	5-Feb-11	4-Feb-12	Date Occurred
Energy (MWh)	Total	178,919	-2%	183,126	9,993,802	
	Maximum	1,252	-3%	1,293	1,705	30-Jul-11
	Average	1,065	-2%	1,090	1,144	
Trading Demand (MW)	Maximum	866	-0%	868	704	29-Oct-11
	Minimum	85%		84%	67%	
Regional Load Factor (%)	Maximum	59.11	-62%	156.16	2129.14	
	Volume-Weighted Ave	36.64	16%	31.69	31.05	
	Time-Weighted Ave	36.89	19%	30.95	30.41	
	Minimum	22.58	122%	-104.31	-956.35	
Trading Price (\$/MWh)	Maximum	31.4	14%	27.5	36.0	
	Minimum	8.9	1%	8.8	0.6	

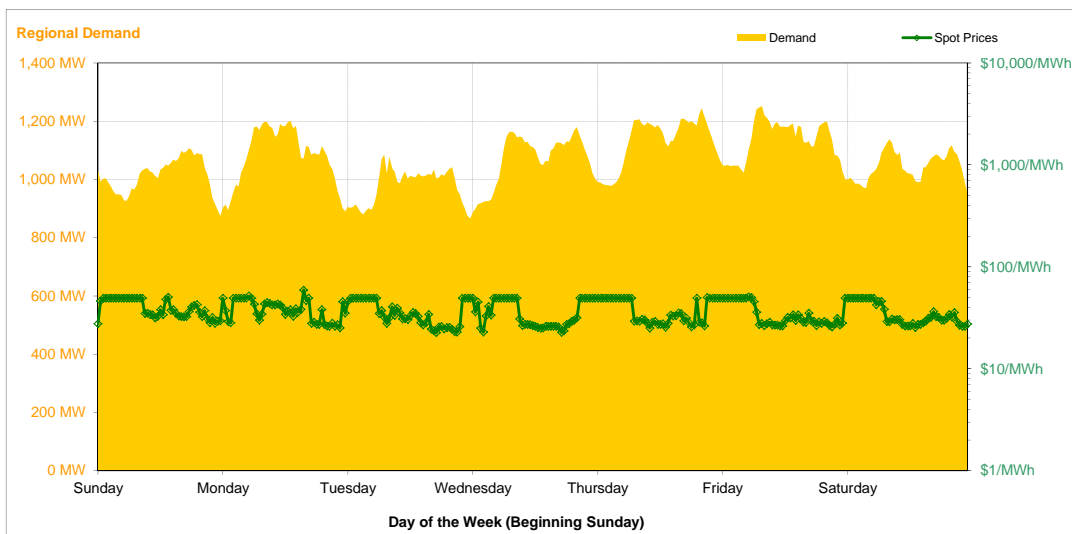


Note that prices below \$1/MWh have been reset to \$1/MWh for the purposes of this display

Current Week

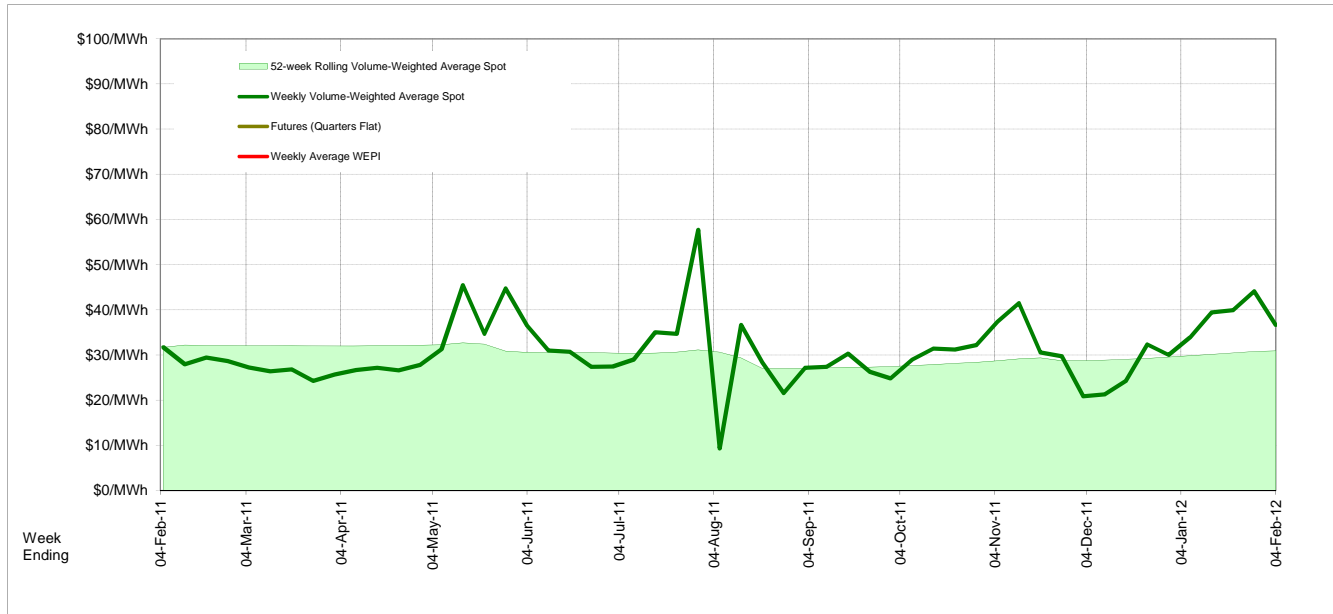
All Data in this table is shown in MWh								
Weekly Total	Sunday	Monday	Tuesday	Wednesday	Thursday	Friday	Saturday	
<b>Total Production by Generation Company</b>								
Aurora Energy	32,690	4,940	4,667	4,559	4,551	4,847	4,597	4,532
Hydro Tasmania	115,932	17,147	21,549	13,656	13,684	15,662	17,599	16,637
Other TAS Plants	0	0	0	0	0	0	0	0
<b>Total internal production</b>	<b>148,622</b>	<b>22,086</b>	<b>26,215</b>	<b>18,215</b>	<b>18,235</b>	<b>20,508</b>	<b>22,195</b>	<b>21,169</b>
(Load at Pumped Storage)	0	0	0	0	0	0	0	0
<b>Net internal production</b>	<b>148,622</b>	<b>22,086</b>	<b>26,215</b>	<b>18,215</b>	<b>18,235</b>	<b>20,508</b>	<b>22,195</b>	<b>21,169</b>
<b>Percentage each company's production represents of the total internal production</b>								
Aurora Energy	22.0%	22.4%	17.8%	25.0%	25.0%	23.6%	20.7%	21.4%
Hydro Tasmania	78.0%	77.6%	82.2%	75.0%	75.0%	76.4%	79.3%	78.6%
Other TAS Plants	0.0%	0.0%	0.0%	0.0%	0.0%	0.0%	0.0%	0.0%
<b>Total Percentage</b>	<b>100.0%</b>	<b>100.0%</b>	<b>100.0%</b>	<b>100.0%</b>	<b>100.0%</b>	<b>100.0%</b>	<b>100.0%</b>	<b>100.0%</b>

Current Week (continued)



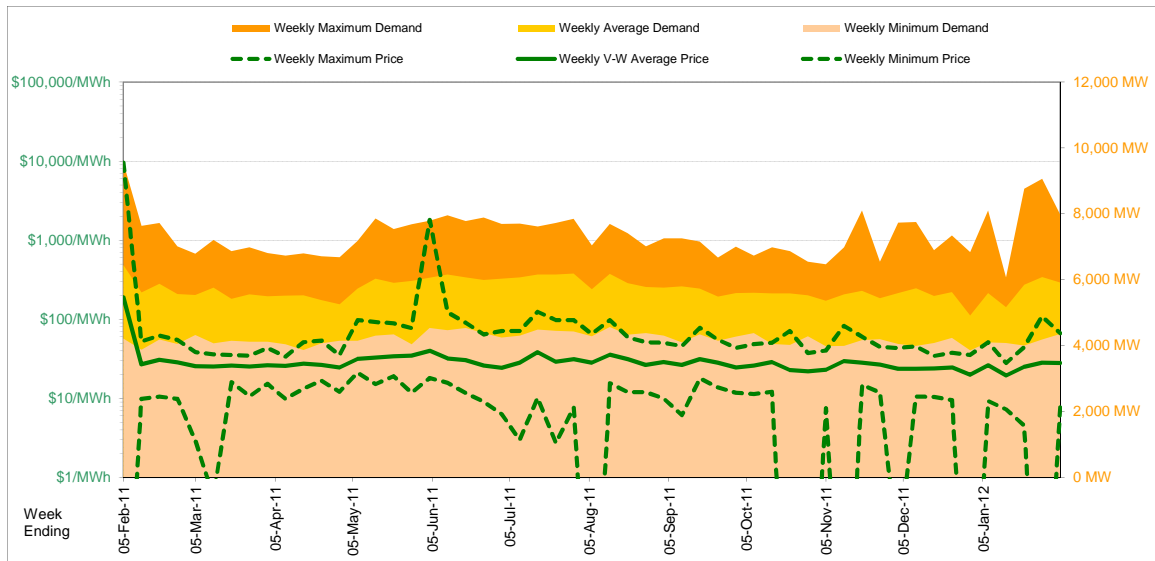
		Sunday	Monday	Tuesday	Wednesday	Thursday	Friday	Saturday
<b>For the Current Week</b>								
Total Energy (MWh)		24,326	25,962	23,485	25,694	27,146	27,268	25,040
Trading Demand Target (MW)	Maximum	1,107	1,201	1,085	1,179	1,244	1,252	1,138
	Average	1,014	1,082	979	1,071	1,131	1,136	1,043
	Minimum	875	890	866	888	977	1,001	954
Regional Load Factor (%)		92%	90%	90%	91%	91%	91%	92%
	Maximum	50.41	59.11	49.14	49.18	49.83	50.61	49.12
Trading Price (\$/MWh)	Volume-Weighted Ave	39.77	38.49	35.60	36.02	37.38	34.41	34.89
	Time-Weighted Ave	39.88	38.44	36.09	36.12	37.92	34.78	35.02
	Minimum	27.64	25.09	22.58	22.65	25.01	25.73	25.22
Temperature °C (Hobart)	Maximum	31.4	28.8	15.4	17.5	18.4	22.1	23.4
	Minimum	14.9	20.3	8.9	10.6	11.2	11.8	12.2
<b>Percentage Change from Same Week Last Year</b>								
Total Energy (MWh)		2%	-2%	-10%	-6%	3%	-2%	-0%
Trading Demand Target (MW)	Maximum	-2%	-4%	-13%	-6%	2%	-3%	-0%
	Average	2%	-2%	-10%	-6%	3%	-2%	-0%
	Minimum	-2%	-2%	-0%	-11%	4%	-0%	4%
Trading Price (\$/MWh)	Maximum	-15%	-42%	-69%	-25%	-15%	-1%	-20%
	Volume-Weighted Ave	63%	-9%	-9%	9%	57%	2%	45%
	Time-Weighted Ave	67%	-6%	-4%	12%	57%	4%	45%
Temperature °C (Hobart)	Maximum	3,314%	127%	135%	403%	124%	40%	3,418%
	Minimum	14%	46%	-16%	-21%	-16%	2%	-3%
Minimum	18%	51%	-40%	20%	-22%	-13%	-17%	
<b>For the Same Week Last Year</b>								
Total Energy (MWh)		23,761	26,514	26,074	27,431	26,435	27,838	25,075
Trading Demand Target (MW)	Maximum	1,134	1,247	1,252	1,256	1,224	1,293	1,141
	Average	990	1,105	1,086	1,143	1,101	1,160	1,045
	Minimum	897	906	868	999	935	1,003	914
Regional Load Factor (%)		87%	89%	87%	91%	90%	90%	92%
	Maximum	59.22	102.58	156.16	65.28	58.88	51.26	61.36
Trading Price (\$/MWh)	Volume-Weighted Ave	24.47	42.41	39.19	32.99	23.89	33.64	24.02
	Time-Weighted Ave	23.81	41.07	37.64	32.34	24.19	33.38	24.23
	Minimum	-0.86	11.03	9.59	4.50	-104.31	18.44	-0.76
Temperature °C (Hobart)	Maximum	27.5	19.7	18.4	22.2	21.9	21.6	24.2
	Minimum	12.6	13.4	14.9	8.8	14.3	13.5	14.7

Long-Term Trends



Current Year

		Week 5 Ending Saturday		52-Weeks Ending Sat		Date Occurred
		4-Feb-12	% change	5-Feb-11	4-Feb-12	
Energy (MWh)	Total	994,324	-8%	1,083,843	49,955,765	
	Maximum	7,991	-16%	9,570	9,069	28-Jan-12
	Average	5,919	-8%	6,451	5,718	
	Minimum	4,355	3%	4,217	3,854	31-Dec-11
Regional Load Factor (%)		74%		67%	63%	
Trading Price (\$/MWh)	Maximum	66.57	-99%	9596.53	1813.84	
	Volume-Weighted Ave	27.93	-85%	189.17	27.92	
	Time-Weighted Ave	26.64	-82%	146.38	26.91	
	Minimum	7.75	105%	-141.61	-332.92	
Temperature °C (Melbourne)	Maximum	34.9	-13%	40.2	40.0	
	Minimum	12.9	-21%	16.4	2.7	

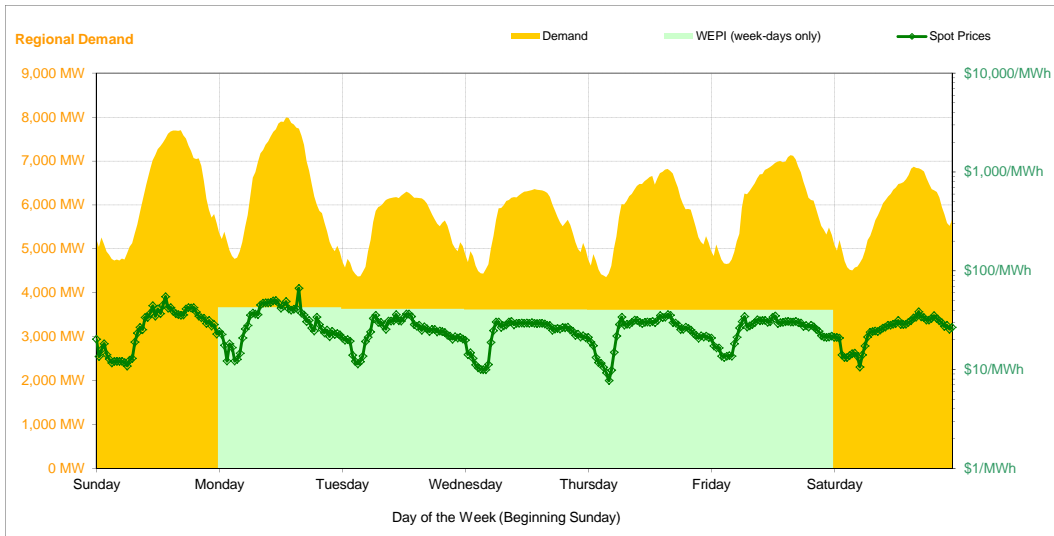


Note that prices below \$1/MWh have been reset to \$1/MWh for the purposes of this display

Current Week

All Data in this table is shown in MWh								
	Weekly Total	Sunday	Monday	Tuesday	Wednesday	Thursday	Friday	Saturday
<b>Total Production by Generation Company</b>								
AGL	14,754	3,480	5,167	1,470	1,460	875	1,191	1,113
Anglesea	26,159	3,795	3,557	3,840	3,840	3,814	3,795	3,519
Aurora Energy	1,007	252	257	118	116	116	116	33
Ecogen Energy	8,943	4,328	4,615	0	0	0	0	0
Energy Brix	24,167	3,548	3,391	3,308	3,498	3,483	3,477	3,463
International Power (Hazelwood)	249,272	37,168	34,092	34,633	35,331	35,533	36,076	36,442
Loy Yang B	174,092	24,192	25,068	25,017	24,925	24,596	25,313	24,983
Loy Yang Power	347,013	47,687	48,529	50,181	49,634	49,792	51,048	50,145
Origin Energy	0	0	0	0	0	0	0	0
Snowy Hydro	6,858	3,684	648	510	375	236	1,363	44
TRUenergy	249,232	36,173	36,050	36,212	35,973	35,791	34,297	34,739
Other VIC Plants	0	0	0	0	0	0	0	0
<b>Total internal production</b>	<b>1,101,495</b>	<b>164,304</b>	<b>161,371</b>	<b>155,287</b>	<b>155,149</b>	<b>154,234</b>	<b>156,673</b>	<b>154,478</b>
(Load at Pumped Storage)	0	0	0	0	0	0	0	0
<b>Net internal production</b>	<b>1,101,495</b>	<b>164,304</b>	<b>161,371</b>	<b>155,287</b>	<b>155,149</b>	<b>154,234</b>	<b>156,673</b>	<b>154,478</b>
<b>Percentage each company's production represents of the total internal production</b>								
AGL	1.3%	2.1%	3.2%	0.9%	0.9%	0.6%	0.8%	0.7%
Anglesea	2.4%	2.3%	2.2%	2.5%	2.5%	2.4%	2.4%	2.3%
Aurora Energy	0.1%	0.2%	0.2%	0.1%	0.1%	0.1%	0.1%	0.0%
Ecogen Energy	0.8%	2.6%	2.9%	0.0%	0.0%	0.0%	0.0%	0.0%
Energy Brix	2.2%	2.2%	2.1%	2.1%	2.3%	2.3%	2.2%	2.2%
International Power (Hazelwood)	22.6%	22.6%	21.1%	22.3%	22.8%	23.0%	23.0%	23.6%
Loy Yang B	15.8%	14.7%	15.5%	16.1%	16.1%	15.9%	16.2%	16.2%
Loy Yang Power	31.5%	29.0%	30.1%	32.3%	32.0%	32.3%	32.6%	32.5%
Origin Energy	0.0%	0.0%	0.0%	0.0%	0.0%	0.0%	0.0%	0.0%
Snowy Hydro	0.6%	2.2%	0.4%	0.3%	0.2%	0.2%	0.9%	0.0%
TRUenergy	22.6%	22.0%	22.3%	23.3%	23.2%	23.2%	21.9%	22.5%
Other VIC Plants	0.0%	0.0%	0.0%	0.0%	0.0%	0.0%	0.0%	0.0%
<b>Total Percentage</b>	<b>100.0%</b>	<b>100.0%</b>	<b>100.0%</b>	<b>100.0%</b>	<b>100.0%</b>	<b>100.0%</b>	<b>100.0%</b>	<b>100.0%</b>

Current Week (continued)



	Sunday	Monday	Tuesday	Wednesday	Thursday	Friday	Saturday	
<b>For the Current Week</b>								
Total Energy (MWh)	149,854	153,307	132,948	134,500	139,047	145,334	139,335	
Trading Demand Target (MW)	Maximum	7,703	7,991	6,304	6,362	6,822	7,131	6,872
	Average	6,244	6,388	5,539	5,604	5,794	6,056	5,806
	Minimum	4,731	4,768	4,369	4,433	4,355	4,651	4,506
Regional Load Factor (%)	81%	80%	88%	88%	85%	85%	84%	
Wholesale Electricity Price Index (WEPI)	N/A	42.73	41.21	40.48	40.27	40.26	N/A	
	Maximum	54.75	66.57	36.57	30.87	36.07	34.87	38.55
	Volume-Weighted Ave	30.57	34.43	25.82	24.74	25.94	26.55	26.42
Trading Price (\$/MWh)	Time-Weighted Ave	28.62	32.45	25.15	24.03	24.94	25.77	25.56
	Minimum	10.87	12.19	11.39	9.99	7.75	13.30	10.62
	Temperature °C (Melbourne)	Maximum	34.9	32.5	20.8	24.5	27.1	32.9
Minimum	20.5	22.3	15.1	12.9	13.7	15.3	16.3	
<b>Percentage Change from Same Week Last Year</b>								
Total Energy (MWh)	3%	-9%	-22%	-17%	-10%	-7%	12%	
Trading Demand Target (MW)	Maximum	-5%	-10%	-34%	-26%	-12%	-11%	20%
	Average	3%	-9%	-22%	-17%	-10%	-7%	12%
	Minimum	12%	1%	-13%	-6%	-15%	-3%	-0%
Wholesale Electricity Price Index (WEPI)	N/A	21%	7%	12%	16%	15%	N/A	
Trading Price (\$/MWh)	Maximum	-46%	-99%	-99%	-88%	-62%	-45%	-70%
	Volume-Weighted Ave	-24%	-94%	-94%	-65%	-34%	-29%	-23%
	Time-Weighted Ave	-18%	-93%	-92%	-62%	-34%	-30%	-25%
Temperature °C (Melbourne)	Minimum	108,600%	-21%	16%	116%	-17%	-12%	107%
	Maximum	-8%	0%	-48%	-12%	6%	-11%	62%
	Minimum	25%	11%	-38%	-26%	-26%	-16%	-10%
<b>For the Same Week Last Year</b>								
Total Energy (MWh)	145,977	168,967	171,106	162,334	155,316	156,072	124,072	
Trading Demand Target (MW)	Maximum	8,137	8,906	9,570	8,599	7,736	8,033	5,711
	Average	6,082	7,040	7,129	6,764	6,471	6,503	5,170
	Minimum	4,217	4,721	5,017	4,732	5,106	4,771	4,523
Regional Load Factor (%)	75%	79%	74%	79%	84%	81%	91%	
Wholesale Electricity Price Index (WEPI)	N/A	35.44	38.42	36.14	34.69	34.94	N/A	
	Maximum	100.79	9596.53	5332.68	258.91	94.81	63.90	128.51
	Volume-Weighted Ave	40.06	593.64	416.48	70.23	39.04	37.57	34.51
Trading Price (\$/MWh)	Time-Weighted Ave	34.77	495.07	323.49	62.92	37.77	36.60	34.05
	Minimum	0.01	15.35	9.81	4.62	9.35	15.20	-141.61
	Temperature °C (Melbourne)	Maximum	38.1	32.5	40.2	27.8	25.6	30.4
Minimum	16.4	20.1	24.5	17.5	18.6	18.2	18.1	

Long-Term Trends

This table contains electricity futures pricing, supplied by d-cyphtrade. All data other than flat and peak quarterly pricing is implied.

		CalYear	FinYear Ending	Q1	Q2	Q3	Q4
<b>Actual Prices for Flat Load (All Times)</b>	2012	38.87		32.50	27.70	47.60	47.50
	2013	53.81	51.93	64.85	48.00	51.55	51.00
	2014	57.93	56.44	70.75	52.75	53.75	
	2015						
<b>Actual Prices for Peak Load (7am-10pm M-F)</b>	2012	49.10		49.00	35.25	55.75	55.75
	2013	68.08	65.24	94.00	57.00	57.35	65.55
	2014	75.39	74.91	125.00	53.50	58.20	
	2015						
<b>Implied Prices for Off-Peak Load (All other times)</b>	2012	30.62		19.19	21.61	41.03	40.85
	2013	42.30	41.20	41.34	40.74	46.87	39.27
	2014	43.85	41.54	27.00	52.15	50.16	
	2015						

